

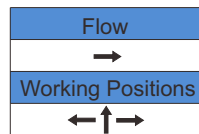
# MODEL : DC-207 [ Disco Check Valve ]

Connection : Wafer PN 40

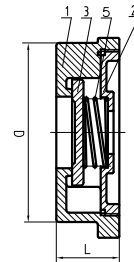
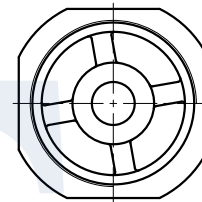


**VTV VALVE**, serving Multi-National end users in a wide range of applications in many industries including:

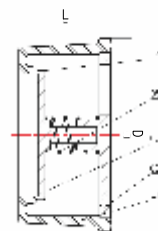
1. Palm Oil and Refinery Plant
2. Food Industries
3. Petrochemical Plant
4. Cooling System
5. Heating



- ◆ **Suitable for :**
1. Water
  2. Steam
  3. Oil
  4. Gases
  5. Non-abrasive media



1/2" - 4"



Above 6"

## ◆ MATERIAL LIST

NO	MATERIAL	MATERIAL
1	BODY	CF8, CF8M
2	COVER	CF8, CF8M
3	DISC	CF8, CF8M
4	SEAT	CF8, CF8M
5	SPRING	SUS316

## ◆ DIMENSIONS (mm)

SIZE	1/2"	3/4"	1"	1-1/4"	1-1/2"	2"	2-1/2"	3"	4"	5"	6"	8"	10"	12"
L	15	19	22	28	33	40	46	50	60	90	106	140	150	160
D	54	63	73	84	88	106	123	134	158	192	215	266	345	410
KG	0.2	0.21	0.27	0.7	0.72	1	2.0	2.1	3.5	8.0	12	22	35	50

Specification is subject to change without prior notice